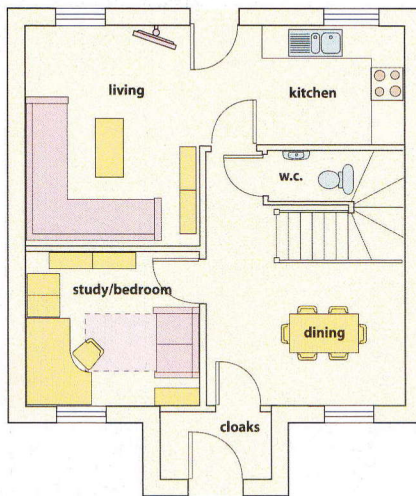
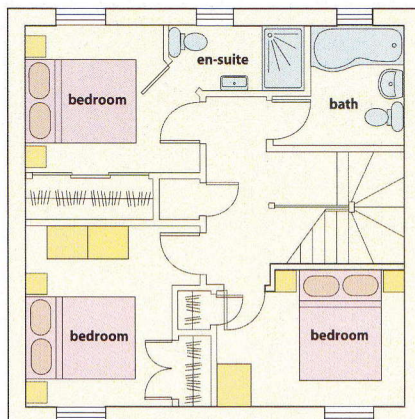




Interior image highlights style and standard of build and is for illustrative purposes.



GROUND FLOOR



FIRST FLOOR

## GREENWICH

The Greenwich is styled on a traditional four bedroom rural cottage on two floors offering a generous 1045 sq feet of living space. The first floor includes a master bedroom with built-in wardrobes and en-suite shower room. The two other upstairs double bedrooms boast built-in wardrobes. There is also a family bathroom and further storage on the landing. The ground floor offers a fully fitted kitchen and spacious living area, a separate dining area and cloakroom. A further downstairs room can be used as a study or as a fourth bedroom. The Greenwich offers fantastic family holidays, a great investment and excellent letting potential.

All of the cottages at The Bay are built to very high standards using traditionally crafted bricks with slate or clay tiled roofs, contain central heating and are double-glazed throughout. They all come with a full 10 year NHBC guarantee.

### THE BAY FILEY

Is open all year round  
7 days a week,  
for your total  
enjoyment